

LouisSaveinDupuisJournalofMultidisciplinaryResearch2024,3:
263-269Doi.: 10.21839/lrdjmr.2024.v3.142

Research Article

BLACKLISTING THE INTRUDERS IN SOCIAL NETWORKING USING STRING TRANSFORMATION

Ms.G.Nandhini.M.sc., M.Phil.,

Assistant Professor,dept of CS&BCA,

Immaculate college for women,chinnakanganankuppam,cuddalore.

Email:nandhini.cud@gmail.com

Abstract

This dissertation centres around the issue of short content rundown on the remark stream of a particular message from Social Network Service (SNS). Because of the high prevalence of SNS, the amount of remarks may increment at a high rate directly after a social message is distributed. The recommended application model for meta facts refrain medium is a procedure for screen the client rehearses in a social relationship, for example, opinion and social event. The application has a foundation watcher which has the course of action of tag line including the executive. The chief can consolidate the rundown of horrendous or cutthroat words. The foundation ace looks for each post posed in the client or mates divider. Precisely when the client post a message the foundation screens the post and checks whether any foul or undesirable word is in the message. On the off chance that any suitable substance is deducted the message is precluded by the foundation divider channel. The divider channel screens the client connection too, for example, visiting in their workspace. The client can see the rundown of boycotted words from their login.

Keywords: *Rapid miner, Keyword filtering, Blacklisting, Boyer-Moore's String Search Algorithm.*

Introduction

The common intention of the information pulling out procedure is to remove information beginning an informational index and change it into a justifiable structure for further use. Beside the crude investigation step, it embraces catalog and information the board outlooks, information pre-preparing, model and deduction contemplations, intriguing quality measurements, intricacy deliberations, post-handling of bring into being arrangements, representation, and web supports uplifting.

The related terms information tunneling, information figuring, and information snooping propose the use of information mining systems to test portions of a more noteworthy individuals enlightening social affair that are (or might be) unreasonably little for dependable exact discoveries to be made about the legitimacy of any models found. These techniques can, regardless, be utilized in assembly new speculations to test against the more prominent information people groups.

Background Of Dm

The handbook pulling out of models from information has occurred for a momentous time allotment. Early techniques for be acquainted with structures in data combine Bayes' guesswork (1700s) and go back to your old ways examination (1800's). The extension, all inclusiveness and extending power of PC advancement has fundamentally comprehensive information assembling, accumulating, and control limit. As instructive accumulations have created in size and unpredictability, direct "hands-on" data examination has dynamically been broadened with indirect, robotized data dealing with, helped by an assortment of revelations in brainwashing building, for instance, neural frameworks, bunch measurement, genetic counts (1950s), decision trees and decision gauges (1960s), and reinforce vector machines (1990s). Data mining is the path toward applying these methods with the objective of uncovering masquerading models in gigantic instructive gatherings. It overcomes any

deterrent from associated estimations and man-made mental aptitude (which standard speaking give the statistical establishment) to catalog the officials by abusing the way wherein data is secured and recorded in databases to execute the certified erudition and disclosure figuring even more proficiently, empowering such systems to be connected with ever superior enlightening files.

Background Study

A long-range easygoing correspondence association (additionally social participation website, or SNS or electronic life) is an online juncture which persons use to manufacture easygoing systems or social association with various individuals who offer proportional human being or calling interests, drills, practicalities or veritable affiliations.

The easygoing affiliation is hovered crosswise over different PC systems. The easygoing affiliations are normally PC structures, interfacing individuals, association, and learning. Long range social correspondence associations move in affiliation and the measure of places of interest. They can join a degree of new data and explicit mechanical gatherings, wearing down work domains and on workstations, on PDAs, for example, tablet PCs and cell phones. They may highlight mechanized cassette/take pictures of/allocation and "web logging" journal sections web (blogging). Online social order organizations are a part of the time well thought-out easygoing affiliation benefits by specialists and clients, in any case in an inexorably wide sense, a community affiliation association conventionally gives an individual-focused association anyway online framework associations are pack focused. Depicted as "goals that stimulate the structure of a game plan of contacts to trade different sorts of substance on the web," long range social correspondence zones give a breathing legroom to cooperation to carry on past eye to eye affiliations. These PC mediated correspondences boundary persons from poles apart systems and may rally round to in cooperation remain up and cultivate new social attach.

Social Impact

Online long-range easygoing correspondence associations formulate it believable to crossing point individuals who

offer happiness and training crosswise over supporting, money related, and geographic edges. Through email and informing, online frameworks are through somewhere a blessing cost-cutting measure and relative thoughtfulness are invigorated through intrigue. Data is fit to a permission cost-cutting measure, as data is a nontrivial pleasant and can be talented at all around that truly matters no expense. Masters have seen that the verbalization "social" can't address mechanical highlights of the easygoing system arranges alone. Consequently, the degree of structure friendliness ought to pick by the certified showcases of its clients. As indicated by the correspondence hypothesis of occupations and satisfactions, a broadening quantity of people are come across to the Internet and electronic frameworks organization to satisfy mental, stacked with tendency, individual integrative, social integrative, and sprain free requirements. In the midst of Internet progression as a move up to satisfy needs, it is as such influencing each day life, including affiliations, school, church, distraction, and family. Affiliations are utilizing online life as an come within reach of to manage find a small number of clarifications regarding potential representatives' characters and direct. In various state of affairs an applicant who possibly will some way or an additional have been tapered has been ousted because of undermining or generally exhausting photographs or remarks presented on social affiliations or showing up on a newsfeed.

Objective of the Study

Catchphrases are connected with orders, and a short time later second-hand to offer fortifications touching goals with the intention of have not unequivocally been supplementary to the Main Database or portrayed as a convention word.

The three phases be imperative to enable watchword overcrowding

- Make possible watchword jamming at an overall echelon
- Enable watchword blocking at an overall level.
- Engage catchphrase hindering for the characterization in a working-class channel

Exactly when catchphrases encompass been

portrayed and watchword overcrowding is made possible for an unambiguous grouping, the application upsets any message whose message contains a catchphrase, and firewood the memorandum as having a spot with the foreordained class.

Literature Survey

Beast Force Algorithm

This computation could be seen as the most effortless string organizing estimation, since it performs character assessments between the checked substance substring and the absolute model from left to right. By virtue of a bewilder or an all out match it moves unequivocally one position to the other side. It requires no preprocessing stage and no extra room.

Knuth-Morris (KMP) Algorithm

This count checks for occasions of a model P inside a basic substance X from left to legitimately by using the observation that when a befuddle occurs, what is the most we can move the guide to avoid overabundance assessments, thusly benefitting by as of late organized characters. This count gives the bit of slack that the pointer in the substance is never decremented.

Apostolico-Giancarlo Algorithm

In this system all the postfixes of the model found in the substance are reviewed and a short time presently the developments enlisted as requirements be around the completion of each undertaking.

The Quick Search (QS) Algorithm

This figuring is an unraveling of the Boyer Moore count [5], its uses only the awful character move [8]. Quick eventually for short models and huge letter sets [9].

Colussi Algorithm

This computation is an enhancement of the Knuth Morris Pratt count [4], where the game plan of model positions is separated into two disjoint subsets. The circumstances in the principal set are not speaking from left to right and when no perplex happens the spots of the consequent subset are inspected from perfect to left [11].

Raita Algorithm

It is a tuned structure from Boyer-Moore-

Horspool count [6]. Here, the interest system starts by differentiating first the uttermost right personality of the skylight against its accomplice in the representation, and after a match, by auxiliary taking a gander at the farthest left temperament of the skylight and the uttermost left moral fiber of the model. Starting there ahead, the leftovers of the characters are stood out from perfect from left until an absolute match or a confuse happens [12].

The Turbo-BM (TBM) Algorithm

This figuring subject to recalling the substring of the substance that organized an expansion of the model during the last character relationships [13].

Berry-Ravindran Algorithm

Is an enhancement of the Quick-Search figuring [8], which subject to the horrendous character conclude that can be gotten by using a speedy circle (or character unrolling cycle) [14].

Deterministic Finite Automaton (DFA)

A data structure that stores all the postfixes or prefixes of a string, engaging fast string organizing. This method subject to changing over the general robot into a deterministic one and diminishes the states and the memory requirements. It has an immediate capital punishment time and besides exhausts additional remembrance if the data structure.

Machine Matcher Algorithm

Is the principle straight figuring subject to deterministic automata, it looks at the substance makeup by makeup, from left to right, performing progresses on the robot [16].

The Reverse Factor (RF) Algorithm

This estimation performs character assessments from perfect to left using the most diminutive postfix robot of the pivot model. The preprocessing stage requires straight reality in the length of the model [13].

Methodology

The clients will make and deal with their have possession of "gatherings" (in the vein of the new Face book gatherings' pages). Each gathering has a landing page that gives a spot to endorsers of post and offer (by redistribution messages, pictures, and so forth.) and a square that gives fundamental data about the gathering. Clients can likewise empower extra highlights in

their claimed page like view companions rundown and include companions by utilizing companion's solicitations just as offer their pictures with chosen gathering's individuals. The status of their companions' solicitations ought to likewise be refreshed here.

System Architecture

In differentiating the language for Filter Rules detail, they regard as three fundamental questions that, as they would see it, authority a message unscrambling choice. In the first place, in OSNs approximating in ordinary daily existence, a similar memorandum may have various implications and pertinence reliant on who invents it. Given the interpersonal association situation, makers may likewise be well-known by misusing data on their social diagram. As a result, FRs ought to enable consumers to circumstances boundaries on significance producers. Producers on which a FR be appropriate be capable of be preferred based on a few distinct criteria; one of the most important is by forcing conditions on their profile's characteristics. In such a technique it is, for illustration, imaginable to characterize principles applying just too young at heart makers or to manufacturer with a prearranged religious/taking side's assessment. This suggests to state conditions on sort, profundity and trust estimations of the relationship(s) makers ought to be associated with request to apply them the predetermined guidelines.

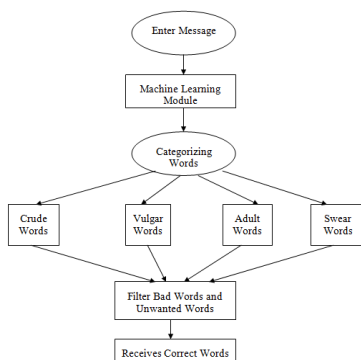


Fig: System Architecture

Blacklisting Process

A supplementary constituent of our structure is a Blacklist (BL) instrument to avoid communication from undesired authors, self-determining from their stuffing. BL is in a straight line supervised by the system, which should be intelligent to establish who are the

users to be inserted in the BL and make your mind up at what time user's withholding in the BL is completed. To augment liveness, such in sequence is given to the taxonomy through a set of regulations, hereafter described BL rules. Such rules are not defined by the Social Network Management, for that reason they are not predestined as wide-ranging far above the ground level commands to be functional to the entire community. Rather, we come to a decision to let the consumers themselves, i.e., the wall's holder to specify BL regulations regulating who have to be disqualified on or after their fortifications furthermore for how long. Therefore, a user capacity be banned commencing a wall, and at the equivalent time, he resolve not be able to placement in the wall.

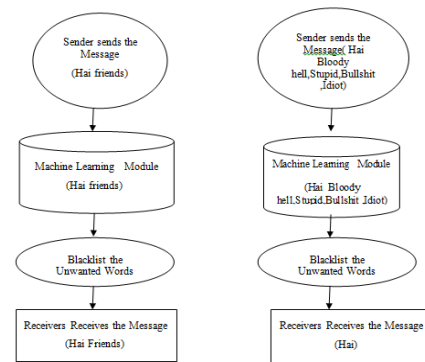


Fig: blacklist

Experimentation Result

In this exploration to analyze and picture the outcome the Tableau is utilized. Clients can make and convey an intelligent and shareable dashboard, which portray the patterns, varieties, and thickness of the information as diagrams and graphs. It is utilized by organizations, scholastic analysts, and numerous administration associations for visual information investigation. It includes the accompanying advances:

- The information investigation should be possible by utilizing required chosen qualities. Every single traits are contrasted and one another. The plot outline and bar chart can be utilized to demonstrate the consequence of traits examination.
- The dataset can be brought into Tableau by utilizing import catch on Tableau - stage.
- Attributes can be chosen for information investigation.

Result Analysis

The following table and chart depict the number of users registered in the portal, number of users who sent the blacklisted messages, the blocked users list and the active users count.

Warnings	Online Users
0 Warnings (No Warnings Received)	3313
1 Warnings	222
2 Warnings	3436
3 Warnings (Final Warning Received)	3020
4 Warnings (Blocked Users)	8

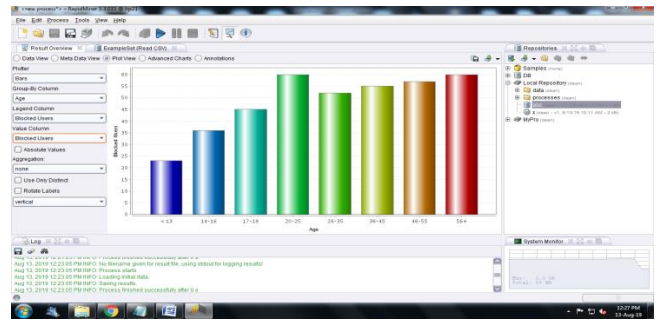


Fig 3 BLOCKED USER DETAILS

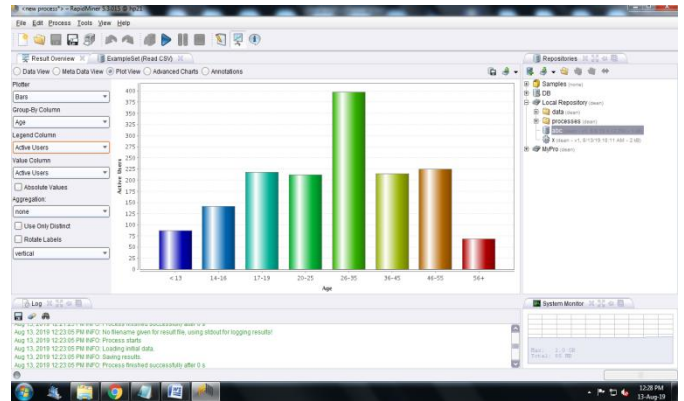


Fig 4 ACTIVE USER DETAILS

Conclusion

A system to keep the profane messages on or after the Social Networking site separators has been shown. The practice of Machine Learning Language has prearranged superior consequences to the structure to pursue the messages and the customers to perceive the extraordinary and shocking messages and the affirmed and unapproved customers in the Social Networking consumer silhouette normally. Thusly the Machine Learning Technique accept a major occupation in this work in order to create the blacklist of the terrible expression and the unapproved customers. The customer needs to revive his security establishing in his precedent to add this procedure to check the irreverence in his open profile.

In this setting a quantifiable examination has been directed to give the use of the incredible and horrendous words by the general population in the goals. As a rule, the revoltingness of the customers has been deflected. This suggestion proposed another quantifiable adapting approach to manage string change. Our procedure is novel and exceptional in its model, learning figuring, and string age count. Two unequivocal applications are tended to with our methodology specifically spelling screw up alteration of inquiries and request

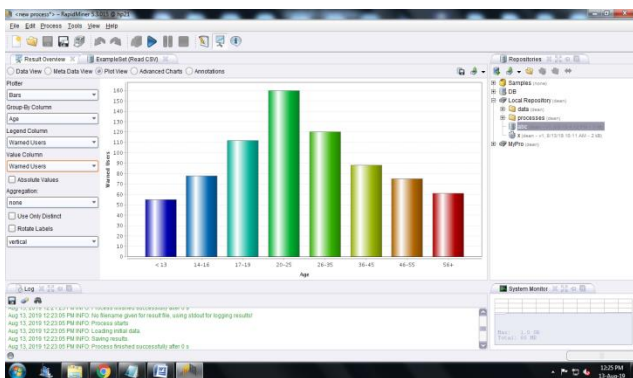


Fig 1. WARNED USERS DETAILS.

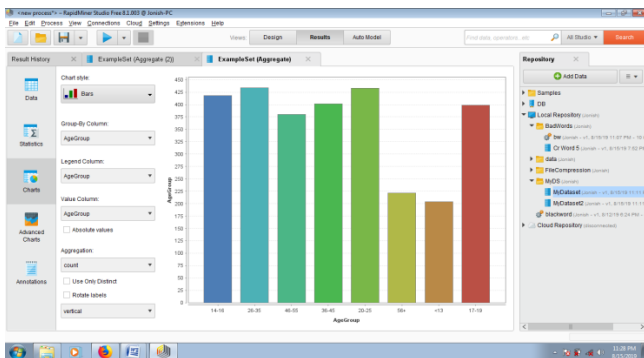


Fig 2 USER REGISTRATION DETAILS

reformulation in web search. Test results on two tremendous educational files and Microsoft Speller Challenge give you an idea about that our system upgrades the baselines to the extent exactness as well as profitability. Our system is predominantly profitable what time the issues take place on an immense scale.

The site can have the going with upgrades. The automated organization has been arranged and developed adaptable for the present necessities of the customer. The reports components contain decisions for making various reports required by the head In future new component built-in this item to improve the adequacy.

In future SMS Facility can be availed to inform the individual users about the blocking of their accounts automatically more prominent safety procedures can be supplementary to this anticipated structure like customer profile isolating catchphrase sieving and square malignant customer development and to discourage the customer.

References

- Perez-Tellez.F, Pinto.D, Cardiff.J, and Rosso.P.
On the Difficulty of Clustering Company Tweets. Proc. of the 2nd International Workshop on Search and Mining User-Generated Contents (SMUC'10), pages 95–102, 2010.
- Dreyer. M, Smith J.R, and Eisner. J,
“Latent-variable modeling of string transductions with finite-state methods,” in Proc. Conf. Empirical Methods Natural Language Processing, Stroudsburg, PA, USA, 2008, pp. 1080–1089.
- Arasu, S. Chaudhuri, and R. Kaushik,
“Learning string transformations from examples,” Proc. VLDB Endow., vol. 2, no. 1, pp. 514–525, Aug. 2009.
- Learning Similarity Metrics for Event Identification in Social Media, Hila Becker, Mor Naaman, Luis Gravano 2012.
- Mining Query Logs: Turning Search Usage Data Into Knowledge, Fabrizio Silvestri 2011.
- Okazaki .N, Y. Tsuruoka .Y . Ananiadou .S, and Tsujii .J,
“A discriminative candidate generator for string transformations,” in Proc. Conf. Empirical Methods Natural Language Processing, Morristown, NJ, USA, 2008, pp. 447–456.
- Dreyer .M, Smith J.R, and Eisner .J,
“Latent-variable modeling of string transductions with finite-state methods,” in Proc. Conf. Empirical Methods Natural Language Processing, Stroudsburg, PA, USA, 2008, pp. 1080–1089.
- Mining Query Logs:
Turning Search Usage Data into Knowledge, Fabrizio Silvestri
- Arasu Chaudhuri.S and Kaushik. R,
“Learning string transformations from examples,” Proc. VLDB Endow., vol. 2, no. 1, pp. 514–525, Aug. 2009.
- Tejada. S, Knoblock .C.A, and Minton.S,
“Learning domain independent string transformation weights for high accuracy object identification,” in Proc. 8th ACM SIGKDD Int. Conf. Knowledge Discovery and Data Mining, New York, NY, USA, 2002, pp. 350–359.
- Information Retrieval for Orc Documents:
A Content-Based Probabilistic Correction Model, Rong Jin, Cheng Xiang Zhai, Alex G. Hauptmann
- G. Amati and F. Crestani, “Probabilistic Learning for
Selective Dissemination of Information,” Information Processing and Management, vol. 35, no. 5, pp. 633- 54, 1999.
- M.J. Pazzani and D. Billsus, “Learning and Revising User
Profiles: The Identification of Interesting Web Sites,” Machine Learning, vol. 27, no. 3, pp. 313-331, 1997.
- A New Approach to String Transformation,
A.Manoj Kumar, Prof. A.Nageswara Rao
- Query Suggestions Using Query-Flow Graphs, Paolo Boldi, Francesco Bonchi, Carlos Castillo
- Y. Zhang and J. Callan, “Maximum Likelihood Estimation for Filtering Thresholds,” Proc. 24th Ann. Int’l ACM SIGIR Conf. Research and Development in Information Retrieval, pp. 294-302, 2001.
- C. Apte, F.Damerau, S.M.Weiss, D. Sholom, and M. Weiss,

- “Automated Learning of Decision Rules for Text Categorization,” *Trans. Information Systems*, vol. 12, no. 3, pp. 233-251, 1994.
- A Probabilistic Approach to String Transformation,
Ziqi Wang, Gu Xu, Hang Li, and Ming Zhang
S. Dumais, J. Platt, D. Heckerman, and M. Sahami, “Inductive Learning Algorithms and Representations for Text Categorization,” *Proc. Seventh Int’l Conf. Information and Knowledge Management (CIKM ’98)*, pp. 148-155, 1998.
- D.D. Lewis, “An Evaluation of Phrasal and Clustered Representations on a Text Categorization Task,” *Proc. 15th ACM Int’l Conf. Research and Development in Information Retrieval (SIGIR ’92)*, N.J. Belkin, P. Ingwersen, and A.M. Pejtersen, eds., pp. 37-50, 1992.
- R.E. Schapire and Y. Singer, “Boostexter: A Boosting-Based System for Text Categorization,” *Machine Learning*, vol. 39, nos. 2/3, pp. 135-168, 2000.
- H. Schütze, D.A. Hull, and J.O. Pedersen, “A Comparison of Classifiers and Document Representations for the Routing Problem,” *Proc. 18th*
- M. Li, Y. Zhang, M. Zhu, and M. Zhou, “Exploring distributional similarity-based models for query spelling correction,” in *Proc. 21st Int. Conf. Computational Linguistics and the 44th Annu. Meeting Association for Computational Linguistics*, Morristown, NJ, USA, 2006, pp. 1025–1032.
- A.R. Golding and D. Roth, “A winnow-based approach to context-sensitive spelling correction,” *Mach. Learn.*, vol. 34, no. 1–3, pp. 107–130, Feb. 1999.
- J. Guo, G. Xu, H. Li, and X. Cheng, “A unified and discriminative model for query refinement,” in *Proc. 31st Annu. Int. ACM SIGIR Conf. Research Development Information Retrieval*, New York, NY, USA, 2008, pp. 379–386.
- A.V. Aho and M. J. Corasick, “Efficient string matching: an aid to bibliographic search,” *Commun. ACM*, vol. 18, no. 6, pp. 333–340, Jun. 1975.
- N. Okazaki, Y. Tsuruoka, S. Ananiadou, and J. Tsujii, “A candidate generator for string transformations,” in *Proc. Conf. Empirical Methods Natural Language Processing*, Morristown, NJ, USA, 2008, pp. 447–456.
- M. Dreyer, J. R. Smith, and J. Eisner, “Latent-variable modeling of string transductions with finite-state methods,” in *Proc. Conf. Empirical Methods Natural Language Processing*, Stroudsburg, PA, USA, 2008, pp. 1080–1089.
- A. Arasu, S. Chaudhuri, and R. Kaushik, “Learning string transformations from examples,” *Proc. VLDB Endow.*, vol. 2, no. 1, pp. 514–525, Aug. 2009.
- S. Tejada, C. A. Knoblock, and S. Minton, “Learning domainindependent string transformation weights for high accuracy object identification,” in *Proc. 8th AC SIGKDD Int. Conf. Knowledge Discovery and Data Mining*, New York, NY, USA, 2002, pp. 350–359
- Dataset URL:
<https://www.freewebheaders.com/full-list-of-bad-words-banned-by-google>